

Mandatory Student Fee Committee Meeting Minutes
Atlanta Campus
25 Park Place, 4th Floor Seminar Room
3 p.m. to 3:24 p.m.
September 27, 2019

PRESENT: Jenni Asman, Boyd Beckwith, Farrah Bernardino, Allison Calhoun-Brown, Ernest Duncan, Susan Feurzeig, Fatoumata Fofana, Chris Goode, Jeana Griffith, Timber Hines, Elisha Howell-Williams, Beth Jones, Evan Malbrough, Kaylee Milani, Peter Minetos, Lenore Musick, Joyce Presswood, Hamza Habibur Rahman, Shantavia Reid-Stroud, Jessica Siemer, Ayani Simpson, Wanda Taylor, Danny Varitek, Chris Garcia Velazquez and Nigel Walton

ABSENT: Chip Hill, Christin Smith, Ashleigh Staine and Johnathan Tshizubu

OPENING:

Dr. Allison Calhoun-Brown opened the meeting at 3 p.m. and introduced Hamza Rahman as co-chair of the Mandatory Student Fee Committee at Atlanta Campus. She gave a brief background of the committee as follows. The Board of Regents requires an annual review of all student fees. This committee is charged with conducting that review and making a recommendation. This is the 11th year in a row we anticipate no increases for student fees. We also have no proposals for the reallocation of student fees. This committee consists of representatives from each of the units that administers a student fee and a corresponding number of students, who must make up 50% of the voting members, which means that some administrators may need to refrain from voting.

Mandatory Student Fee Committee Membership & Procedures – Atlanta (Attachment 1)

Mandatory Student Fee Committee Organizational Chart – Atlanta (Attachment 2)

INTRODUCTIONS:

Everyone introduced themselves and stated the administrative unit they represented.

MANDATORY STUDENT FEE PROCESS:

The Mandatory Student Fee Hierarchy for Recommendations/Approvals handout was distributed and briefly reviewed by Dr. Calhoun-Brown. (Attachment 3)

After this committee makes a recommendation, Dr. Calhoun-Brown will represent the fee at the Fiscal Advisory Committee to the President (FAC-P).

OVERVIEW OF MANDATORY STUDENT FEES:

Facts on Student Fees at Georgia State University (Attachment 4)

The committee reviewed the handout describing each student fee. It includes a pie chart representing the total fees of \$660.00. All fees were open for questions.

University System of Georgia Mandatory Fee Rates Per Semester – FY 2020 (Attachment 5)

This document was included largely for context, but not discussed.

Discussion Included

The committee had a discussion on the gross amount of fees.

The committee had a discussion on posting the minutes from the Mandatory Student Fee meeting on the web.

The committee had a discussion on parking spaces at Turner Field.

The committee had a discussion on allocation of the Health Fee in 2017. The Board of Regents ruled that the health fee could not receive any additional funds until its reserve was expended.

The committee had a discussion on e-sports. In 2017, the Vice President of Student Affairs decided to classify e-sport as an essential service.

The committee had a discussion on fee usage.

The committee had a discussion on how student stipend increases impact the Athletic Fee.

MOTION AND VOTING RESULTS:

- **MOTION:** Chris Goode motioned to approve the same allocation of student fees this year that we had last year, as we had no increase in student fees and no proposals to consider for the reallocation of student fees this year.
- Jessica Siemer seconded.
- After a headcount, there were nine students eligible to vote. Chris Goode was the 10th faculty/staff member on the committee and therefore agreed to sit out to even the voting members.
- Hamza Rahman did the roll call for voting.
- There were nine students and nine staff/faculty who voted. They are as follows:
 - Students:
 - Fatoumata Fofana
 - Evan Malbrough
 - Kaylee Milani
 - Peter Minetos
 - Jessica Siemer
 - Ayani Simpson
 - Danny Varitek
 - Chris Garcia Velazquez
 - Nigel Walton
 - Staff/Faculty:
 - Boyd Beckwith
 - Farrah Bernardino
 - Ernest Duncan
 - Jeana Griffith
 - Timber Hines

- Elisha Howell
 - Beth Jones
 - Lenore Musick
 - Shantavia Reid-Stroud
- The breakdown of the vote is as follows:
 - 17 voted Yes (8 students and 9 staff/faculty); and 1 Abstain (student)
 - Dr. Calhoun-Brown thanked the committee for their service and asked them to inform her of any additional questions or concerns. The meeting adjourned approximately 3:24 p.m.

Mandatory Student Fee Committee Membership & Procedures Atlanta Campus

Membership:

The Atlanta Mandatory Student Fee Committee shall consist of the following: the Vice President for Student Engagement and Programs, the Atlanta campus Executive Vice President of the Student Government Association (SGA), one representative from each unit that administers the student fee, and corresponding number of student members so that the committee is 50% students. A representative from the Provost Office and the Office of Budget and Planning shall serve as ex-officio members of the committee.

Procedures:

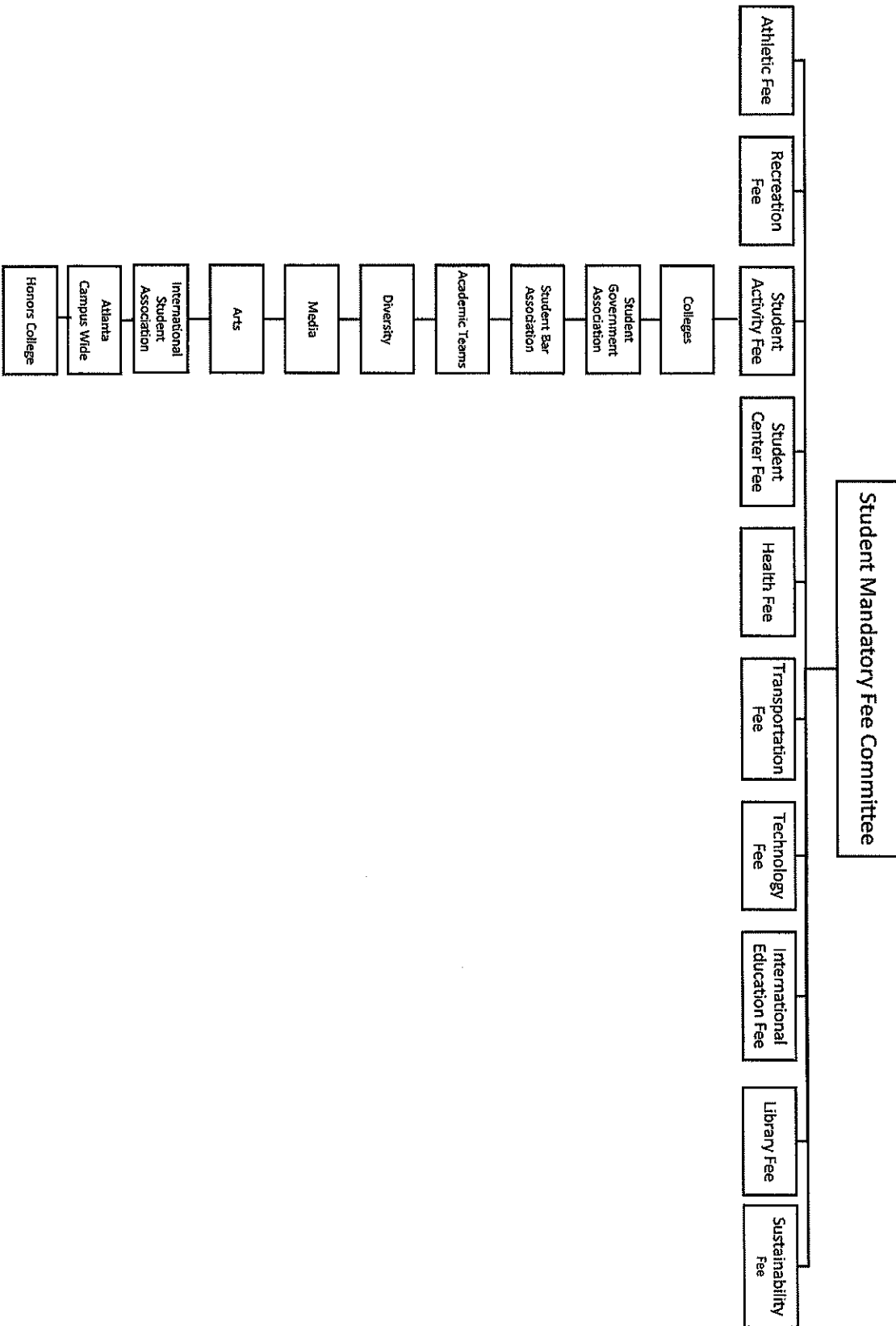
The Vice President for Student Engagement and Programs shall serve as the chair of the committee and thus convenes the committee and presides over meetings, but does not vote. The Atlanta Executive Vice President of SGA shall serve as Vice-Chair. Tie votes are treated as failed-to-pass. Quorum for all votes shall consist of at least an equal number of students to other members.

Non-student representatives shall be appointed by their respective unit. The Atlanta Executive Vice President of Student Government Association shall appoint all student representatives to the committee. Vacancies on the committee shall be filled by the Chair and Vice-chair. Student vacancies shall be filled by the Atlanta Executive Vice President of SGA, the Vice President for Student Engagement and Programs shall fill all other vacancies.

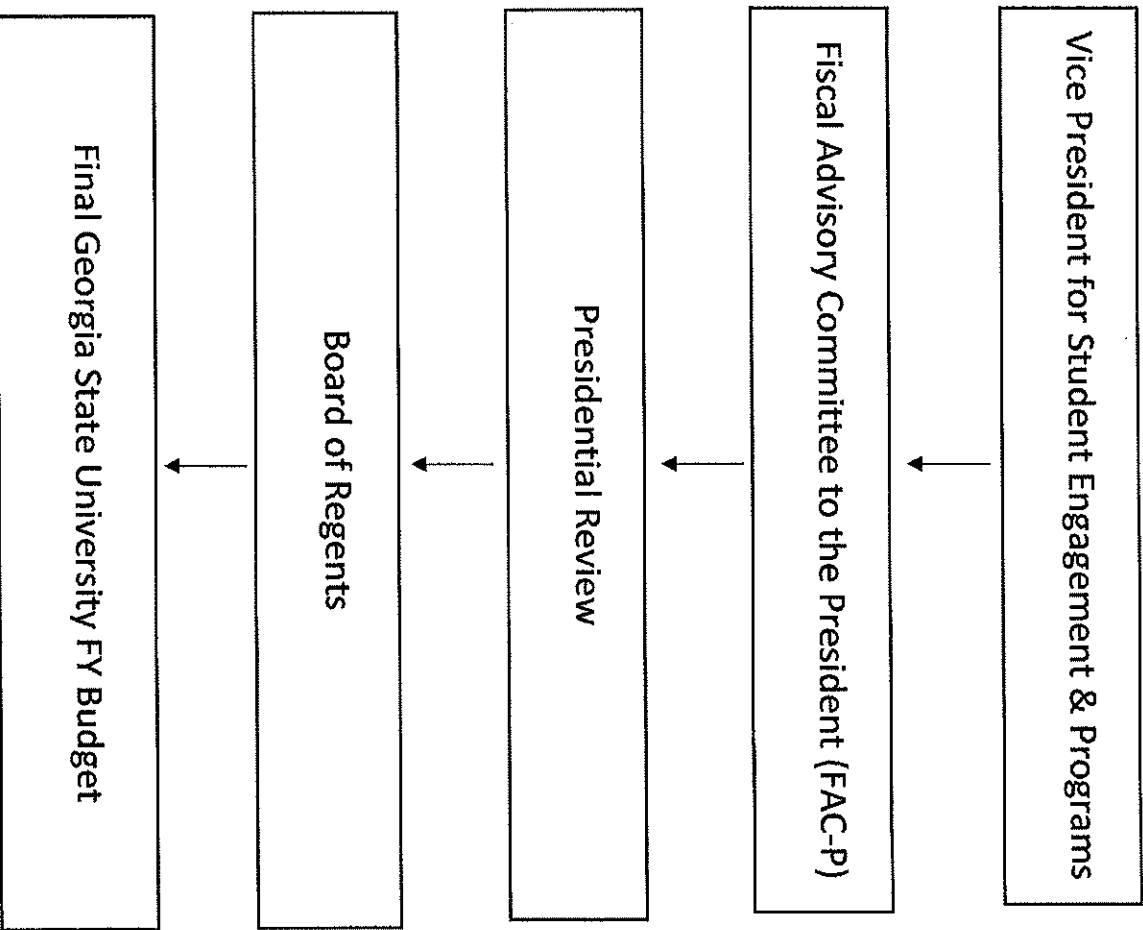
Process:

Each group that oversees the allocation of student fees must submit proposals for the creation of new fees or fee increases to the committee at least one month prior to the Fiscal Advisory Committee to the President's (FAC-P) student fee hearings. The Student Fee Committee will review the proposals and forward its recommendations to FAC-P, the President and the Central Office of the University System of Georgia.

Mandatory Student Fee Committee - Atlanta
Organizational Chart
September 27, 2019

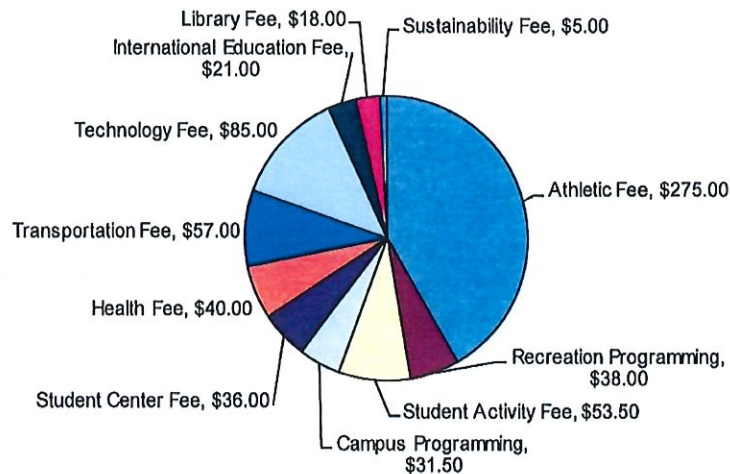


Mandatory Student Fee Hierarchy for Recommendations/Approvals



DIVISION OF STUDENT SUCCESS

FISCAL YEAR 2020

FACTS ON STUDENT FEES AT GEORGIA STATE UNIVERSITY**2019-2020 Mandatory Fees**

Each of the student fees are used for vastly different purposes. The overriding philosophy regarding fees is to provide a comprehensive offering of quality programs and services to Georgia State University students outside the classroom.

- **The Student Activity Fee is distributed by a committee of seven students and three faculty/staff and is allocated to over 550 chartered student organizations.** These funds provide a range of direct student services. Student organizations that receive these dollars are chartered through Leadership Programs and provide a wide range of services, including presentations, workshops, student media, and diversity programs. In addition, various student groups are supported whose activities are related to their specific degree program.
- **Campus Programming** supports a variety of campus wide programming initiatives. These include Spotlight Program Board (e.g. Homecoming, Panther Prowl, Distinguished Speakers Series and musical presentations) as well as other campus wide initiatives that promote leadership development and multicultural competence.
- **The Athletic Fee** is used to support varsity intercollegiate athletics. This fee is used for athletic scholarships and other costs associated with competitive athletics. The athletic fee allows students to use their Panther Card for free access to athletic events.
- **The Transportation Fee** is used to help fund the cost of operating the shuttle service (which transports students to campus from Turner Field), and the cost of leasing over 1,000 parking spaces at Turner Field. Additionally, the transportation fee provides for a significant discount on the purchase of monthly MARTA Breezecards.
- **The Health Fee** funds three areas of health and psychological wellness for Georgia State University students: (1) Health Clinic; (2) Student Health Promotion; and (3) Psychiatric Services. Students may visit the GSU Health Clinic to receive ongoing medical consultations and receive prescriptions via appointments or through the urgent sick visit process. Psychiatric services, including psychiatric evaluation, medication, management, and clinical consultation, are provided in the GSU Counseling & Testing Center by doctors and interns from Emory University Hospital. Student Health Promotion supports activities that empower Georgia State University students to make informed healthier choices and achieve academic success.

- **The Student Recreation Center** supports all programming, operations and facility needs that occur at the Student Recreation Center, Indian Creek Recreation and Panthersville areas. Since its inception in 2001, the Student Recreation Center has consistently been one of the highest accessed facilities on campus with over 8 million entries to date. The fee allows the department to offer a wide variety of programs and services for either no additional charge or at a very minimal additional fee.
- **The Student Center Fee** provides funding support for the operation and long-term repair and replacement of the Student Center (East and West). The Student Center serves as center for the campus community by providing meeting and event spaces, lounge and study spaces and student service offices. The Student Center hosts over 8,000 events per year with over 2.4 million visitors per year.
- **The Library Fee** provides funding for extended library hours and the renovation of library facilities.
- **The International Education Fee** supports Study Abroad by providing scholarships for international study. The fee also provides for compliance with the federally mandated Student and Exchange Visitor Information System (SEVIS).
- **The Technology Fee** is used primarily to benefit students to assist them in meeting the educational objectives of their academic program by providing access to computers, software, databases, networks and other services.
- **The Sustainability Fee** supports campus wide sustainability initiatives.
- **Tuition is used to cover the academic costs of your education.** It is used in combination with state appropriations and donations to fund classroom instruction, academic facilities and faculty/staff salaries. Unfortunately, costs do rise. However, GSU's tuition continues to be lower than most large southeastern universities, and the percentage of increase has been kept lower than many similar institutions.

Clearly, in order to keep fees reasonable, many students subsidize services that they do not use. It is the intention of the university that the comprehensiveness of the services and programs provided will offer something for everyone.

Fee amount and percentage of total fee:

| | | |
|-----------------------------|----------|--------|
| Athletic Fee | \$275.00 | 41.67% |
| Recreation Programming | \$38.00 | 5.76% |
| Student Activity Fee | \$53.50 | 8.11% |
| Campus Programming | \$31.50 | 4.77% |
| Student Center Fee | \$36.00 | 5.45% |
| Health Fee | \$40.00 | 6.06% |
| Transportation Fee | \$57.00 | 8.64% |
| Technology Fee | \$85.00 | 12.88% |
| International Education Fee | \$21.00 | 3.18% |
| Library Fee | \$18.00 | 2.73% |
| Sustainability Fee | \$5.00 | .76% |
| | <hr/> | |
| | \$660.00 | 100% |

**APPENDIX IIIA
BOARD OF REGENTS
UNIVERSITY SYSTEM OF GEORGIA
MANDATORY FEE RATES PER SEMESTER - FISCAL YEAR 2020
EFFECTIVE FALL SEMESTER**

| | APPROVED RATE FALL 2018 | RECOMMENDED RATE FALL 2019 |
|---|--|---|
| Augusta University | | |
| Activity | 47 | 47 |
| Athletic | 175 | 175 |
| Health | 140 | 140 |
| Special Institutional Fee (Health Sciences Campus)* | 450 | 450 |
| Student Center-Facility | 43 | 43 |
| Technology | 110 | 110 |
| Transportation | 50 | 50 |
| Wellness | 40 | 50 |
| | \$1,055 | \$1,065 |
| *Special Institutional Fee (Summerville Campus) | \$355 | \$355 |
| Georgia Institute of Technology | | |
| Activity | 40 | 40 |
| Athletic | 127 | 127 |
| CRC Operations Fee | 51 | 51 |
| Health | 168 | 172 |
| Recreation | 54 | 54 |
| Special Institutional Fee -- Undergraduate Students** | 544 | 544 |
| Student Center Operations | 32 | 32 |
| Technology | 107 | 107 |
| Transportation | 85 | 85 |
| | \$1,208 | \$1,212 |
| ** Special Institutional Fee for Graduate Students Only | \$344 | \$344 |

**APPENDIX IIIA
BOARD OF REGENTS
UNIVERSITY SYSTEM OF GEORGIA
MANDATORY FEE RATES PER SEMESTER - FISCAL YEAR 2020
EFFECTIVE FALL SEMESTER**

| | APPROVED RATE FALL 2018 | RECOMMENDED RATE FALL 2019 |
|---|--|---|
| Georgia State University | | |
| Activity | 85 | 85 |
| Athletic | 275 | 275 |
| Health | 40 | 40 |
| International | 21 | 21 |
| Library Fee | 5 | 5 |
| Library Facility Fee | 13 | 13 |
| Recreation Fee | 38 | 38 |
| Special Institutional Fee | 404 | 404 |
| Student Center-Facility | 36 | 36 |
| Sustainability Fee | 5 | 5 |
| Technology | 85 | 85 |
| Transportation | 57 | 57 |
| | \$1,064 | \$1,064 |
| Georgia State University – Perimeter College | | |
| Activity | 47 | 47 |
| Athletic | 38 | 38 |
| Health Services | 27 | 27 |
| International | 3 | 3 |
| Recreation-Facility | 3 | 3 |
| Special Institutional Fee | 200 | 200 |
| Student Center-Facility | 168 | 168 |
| Sustainability Fee | 2 | 2 |
| Technology | 50 | 50 |
| Transportation | 2 | 2 |
| | \$540 | \$540 |

**APPENDIX IIIA
BOARD OF REGENTS
UNIVERSITY SYSTEM OF GEORGIA
MANDATORY FEE RATES PER SEMESTER - FISCAL YEAR 2020
EFFECTIVE FALL SEMESTER**

| | APPROVED RATE FALL 2018 | RECOMMENDED RATE FALL 2019 |
|---|--|---|
| University of Georgia | | |
| Activity | 78 | 78 |
| Athletic | 53 | 53 |
| Connect UGA Fee | 30 | 30 |
| Green Fee | 3 | 3 |
| Health | 203 | 206 |
| Recreation | 15 | 15 |
| Special Institutional Fee | 450 | 450 |
| Student Center-Facility | 75 | 75 |
| Technology | 114 | 114 |
| Transportation | 118 | 121 |
| | \$1,139 | \$1,145 |
| Georgia Southern University | | |
| Activity | 101 | 101 |
| Athletic | 214 | 214 |
| Athletic Facility Fee | 40 | 40 |
| Health | 94 | 94 |
| Recreation | 42 | 42 |
| Recreation Activity Center | 100 | 100 |
| Special Institutional Fee | 290 | 290 |
| Sustainability Fee | 10 | 10 |
| Technology | 100 | 100 |
| Transit | 55 | 55 |
| | \$1,046 | \$1,046 |
| Georgia Southern University – Armstrong Campus | | |
| Activity | 49 | 49 |
| Athletic | 90 | 90 |
| Health | 20 | 20 |
| Recreation | 45 | 45 |
| Student Center-Facility | 110 | 110 |
| Special Institutional Fee | 113 | 113 |
| Technology | 100 | 100 |
| | \$527 | \$527 |

**APPENDIX IIIA
BOARD OF REGENTS
UNIVERSITY SYSTEM OF GEORGIA
MANDATORY FEE RATES PER SEMESTER - FISCAL YEAR 2020
EFFECTIVE FALL SEMESTER**

| | APPROVED RATE FALL 2018 | RECOMMENDED RATE FALL 2019 |
|-----------------------------------|--|---|
| Kennesaw State University | | |
| Activity | 39 | 39 |
| Athletic | 221 | 221 |
| Health | 51 | 51 |
| International | 11 | 6 |
| Parking | 93 | 93 |
| Recreation Center | 97 | 97 |
| Special Institutional Fee | 300 | 300 |
| Sports & Recreation Parks Fee | 75 | 80 |
| Technology | 55 | 55 |
| Transportation | 58 | 58 |
| Wellness | 3 | 3 |
| | \$1,003 | \$1,003 |
| University of West Georgia | | |
| Activity | 59 | 59 |
| Athletic | 195 | 195 |
| Athletic Complex | 105 | 105 |
| Facility Fee | 126 | 126 |
| Health | 101 | 101 |
| International | 5 | 5 |
| Special Institutional Fee | 290 | 290 |
| Technology | 55 | 55 |
| Transportation | 76 | 76 |
| | \$1,012 | \$1,012 |

**APPENDIX IIIA
BOARD OF REGENTS
UNIVERSITY SYSTEM OF GEORGIA
MANDATORY FEE RATES PER SEMESTER - FISCAL YEAR 2020
EFFECTIVE FALL SEMESTER**

| | APPROVED RATE FALL 2018 | RECOMMENDED RATE FALL 2019 |
|----------------------------------|--|---|
| Valdosta State University | | |
| Access Card | 10 | 10 |
| Activity | 37 | 37 |
| Athletic | 146 | 146 |
| Athletic Fieldhouse Fee | 29 | 32 |
| Health | 98 | 98 |
| Health Facility | 52 | 52 |
| Parking Deck Facilities | 118 | 138 |
| Recreation | 80 | 80 |
| Special Institutional Fee | 295 | 295 |
| Student Center | 91 | 101 |
| Student Union Operating Fee | 17 | 17 |
| Technology | 65 | 65 |
| Transportation | 35 | 35 |
| | \$1,073 | \$1,106 |
| Albany State University | | |
| Access Card | 10 | 10 |
| Activity | 85 | 85 |
| Athletic | 145 | 170 |
| Health | 40 | 50 |
| Special Institutional Fee | 225 | 225 |
| Student Center-Facility | 280 | 280 |
| Technology | 65 | 65 |
| Transportation | 35 | 50 |
| | \$885 | \$935 |

**APPENDIX IIIA
BOARD OF REGENTS
UNIVERSITY SYSTEM OF GEORGIA
MANDATORY FEE RATES PER SEMESTER - FISCAL YEAR 2020
EFFECTIVE FALL SEMESTER**

| | APPROVED RATE FALL 2018 | RECOMMENDED RATE FALL 2019 |
|-------------------------------------|--|---|
| Clayton State University | | |
| Access Card | 20 | 20 |
| Activity | 60 | 60 |
| Athletic | 170 | 170 |
| Health | 46 | 46 |
| Parking | 34 | 34 |
| Special Institutional Fee | 250 | 250 |
| Student Center-Facility | 100 | 100 |
| Technology | 57 | 57 |
| | \$737 | \$737 |
| Columbus State University | | |
| Activity | 67 | 67 |
| Athletic | 200 | 200 |
| Health | 53 | 53 |
| International | 14 | 14 |
| Parking Deck | 47 | 47 |
| Recreation-Facility | 180 | 180 |
| Special Institutional Fee | 265 | 265 |
| Technology | 79 | 79 |
| Transportation | 30 | 30 |
| | \$935 | \$935 |
| Fort Valley State University | | |
| Activity | 71 | 71 |
| Athletic | 220 | 220 |
| Health | 73 | 73 |
| Special Institutional Fee | 250 | 250 |
| Student Center-Facility | 150 | 180 |
| Technology | 70 | 70 |
| Transportation | 20 | 20 |
| | \$854 | \$884 |

**APPENDIX IIIA
BOARD OF REGENTS
UNIVERSITY SYSTEM OF GEORGIA
MANDATORY FEE RATES PER SEMESTER - FISCAL YEAR 2020
EFFECTIVE FALL SEMESTER**

| | APPROVED RATE FALL 2018 | RECOMMENDED RATE FALL 2019 |
|---|--|---|
| Georgia College & State University | | |
| Access Card (BobCat) | 9 | 9 |
| Activity | 133 | 133 |
| Athletic | 181 | 181 |
| Health | 95 | 95 |
| Special Institutional Fee | 275 | 275 |
| Technology | 68 | 68 |
| Transportation/Parking | 75 | 75 |
| Wellness Center | 175 | 175 |
| | \$1,011 | \$1,011 |
| Georgia Southwestern State University | | |
| Activity | 65 | 65 |
| Athletic | 205 | 215 |
| Health | 80 | 80 |
| Special Institutional Fee | 242 | 242 |
| Success Center | 38 | 38 |
| Technology | 60 | 60 |
| Transportation | 18 | 18 |
| | \$708 | \$718 |
| Middle Georgia State University | | |
| Activity | 45 | 45 |
| Athletic | 130 | 130 |
| Health | 20 | 20 |
| Parking | 10 | 10 |
| Recreation (Macon Campus only)* | 140 | 165 |
| Special Institutional Fee | 250 | 250 |
| Technology | 46 | 46 |
| | \$641 | \$666 |
| *Recreation (Warner Robins Campus) | \$40 | \$45 |

**APPENDIX IIIA
BOARD OF REGENTS
UNIVERSITY SYSTEM OF GEORGIA
MANDATORY FEE RATES PER SEMESTER - FISCAL YEAR 2020
EFFECTIVE FALL SEMESTER**

| | APPROVED RATE FALL 2018 | RECOMMENDED RATE FALL 2019 |
|---|--|---|
| Savannah State University | | |
| Activity | 55 | 55 |
| Athletic | 300 | 300 |
| Health | 67 | 67 |
| Special Institutional Fee | 202 | 202 |
| Student Center and Stadium Facility | 200 | 200 |
| Technology | 50 | 50 |
| Transportation | 45 | 45 |
| | \$919 | \$919 |
| University of North Georgia - Dahlonega | | |
| Activity | 65 | 65 |
| Athletic | 200 | 200 |
| Health* | 70 | 65 |
| Recreation Center | 83 | 83 |
| Special Institutional Fee | 225 | 225 |
| Technology | 75 | 75 |
| Transportation | 220 | 220 |
| | \$938 | \$933 |
| *Fee reduced to \$65 beginning Spring 2020. Remains \$70 for Fall 2019 | | |
| University of North Georgia - Gainesville, Oconee, Cumming, Blue Ridge | | |
| Activity | 42 | 42 |
| Health (Gainesville only)* | | 65 |
| Special Institutional Fee | 225 | 225 |
| Technology | 75 | 75 |
| Transportation** | 85 | 85 |
| | \$427 | \$492 |

*Begins Spring 2020

**Not assessed on Blue Ridge campus

**APPENDIX IIIA
BOARD OF REGENTS
UNIVERSITY SYSTEM OF GEORGIA
MANDATORY FEE RATES PER SEMESTER - FISCAL YEAR 2020
EFFECTIVE FALL SEMESTER**

| | APPROVED RATE FALL 2018 | RECOMMENDED RATE FALL 2019 |
|---|--|---|
| Abraham Baldwin Agricultural College | | |
| Access Card | 20 | 20 |
| Activity | 50 | 50 |
| Athletic* | 88 | 88 |
| Health* | 63 | 63 |
| Special Institutional Fee | 200 | 200 |
| Technology | 50 | 50 |
| Transportation | 30 | 30 |
| | \$501 | \$501 |
| * Not assessed on Bainbridge, Blakely, and Donalsonville campuses | | |
| Atlanta Metropolitan State College | | |
| Activity | 60 | 60 |
| Athletic | 65 | 0 |
| Special Institutional Fee | 200 | 200 |
| Student Center Fee | 160 | 240 |
| Technology | 40 | 40 |
| | \$525 | \$540 |
| College of Coastal Georgia | | |
| Access Card | 15 | 15 |
| Activity | 60 | 60 |
| Athletic | 175 | 175 |
| Campus Center | 125 | 125 |
| Recreation & Intramural | 25 | 25 |
| Special Institutional Fee | 225 | 225 |
| Technology | 60 | 60 |
| | \$685 | \$685 |

**APPENDIX IIIA
BOARD OF REGENTS
UNIVERSITY SYSTEM OF GEORGIA
MANDATORY FEE RATES PER SEMESTER - FISCAL YEAR 2020
EFFECTIVE FALL SEMESTER**

| | APPROVED RATE FALL 2018 | RECOMMENDED RATE FALL 2019 |
|-----------------------------------|--|---|
| Dalton State College | | |
| Access Card | 20 | 20 |
| Activity | 40 | 40 |
| Athletic | 117 | 117 |
| Health Center | 30 | 30 |
| Parking Deck | 65 | 65 |
| Recreation | 20 | 20 |
| Special Institutional Fee | 200 | 200 |
| Technology | 48 | 48 |
| Transportation | 20 | 20 |
| | \$560 | \$560 |
| East Georgia State College | | |
| Access Card | 15 | 0 |
| Activity | 33 | 33 |
| Athletic | 100 | 100 |
| Health | 30 | 30 |
| Parking | 15 | 15 |
| Special Institutional Fee | 200 | 200 |
| Technology | 50 | 50 |
| Transportation | 75 | 75 |
| | \$518 | \$503 |
| Georgia Gwinnett College | | |
| Activity | 55 | 55 |
| Athletic | 160 | 160 |
| Health | 25 | 40 |
| Health & Wellness | 70 | 70 |
| Infrastructure Support Fee | 35 | 35 |
| International | 7 | 7 |
| Parking | 100 | 100 |
| Special Institutional Fee | 245 | 245 |
| Student Center | 115 | 115 |
| Technology | 40 | 40 |
| | \$852 | \$867 |

**APPENDIX IIIA
BOARD OF REGENTS
UNIVERSITY SYSTEM OF GEORGIA
MANDATORY FEE RATES PER SEMESTER - FISCAL YEAR 2020
EFFECTIVE FALL SEMESTER**

| | APPROVED RATE FALL 2018 | RECOMMENDED RATE FALL 2019 |
|------------------------------------|--|---|
| Georgia Highlands College | | |
| Access Card | 17 | 17 |
| Activity | 40 | 40 |
| Athletic | 85 | 85 |
| Special Institutional Fee | 200 | 200 |
| Student Support Services Fee | 130 | 130 |
| Technology | 50 | 50 |
| Transportation | 10 | 10 |
| | \$532 | \$532 |
| Gordon State College | | |
| Activity | 54 | 54 |
| Athletic | 85 | 85 |
| Health | 20 | 20 |
| Special Institutional Fee | 200 | 200 |
| Student Recreation Center | 162 | 192 |
| Technology | 52 | 52 |
| Transportation | 10 | 10 |
| | \$583 | \$613 |
| South Georgia State College | | |
| Access Card | 15 | 15 |
| Activity | 55 | 55 |
| Athletic | 115 | 115 |
| Parking/Campus Access | 10 | 10 |
| Records | 10 | 10 |
| Special Institutional Fee | 170 | 170 |
| Student Center-Facility | 55 | 55 |
| Technology | 85 | 85 |
| | \$515 | \$515 |